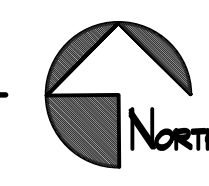


CONTRACTOR OPTION:
 CONTRACTOR TO VERIFY EXISTING CONDITION OF REFRIGERANT PIPING. IF PIPING IS FOUND TO BE IN GOOD CONDITION WITH NO LEAKS, CONTRACTOR CAN RE-USE EXISTING PIPING INSTEAD OF INSTALLING NEW PIPING. IF EXISTING PIPING IS RE-USED, CONTRACTOR MUST CLEAN AND PURGE LINES USING RX-11 CLEANING KIT BEFORE NEW R410A REFRIGERANT IS INSTALLED AND NEW CONDENSING UNITS AND COILS CONNECTED. EXISTING LINES MUST HOLD PRESSURE AND DEMONSTRATE INTEGRITY THROUGH-OUT SYSTEM.

- NOTES:**
- EXISTING AIR HANDLER TO BE REMOVED AND REPLACED WITH NEW. DISASSEMBLE AS REQUIRED. SEE CONTRACTOR OPTION ON THIS SHEET FOR REFRIGERATION PIPING OPTIONS. DISCONNECT DUCTWORK, MOUNTING HARDWARE, CONDENSATE DRAIN, AND REFRIGERATION LINES FOR NEW EQUIPMENT TO BE INSTALLED. LOCATIONS ARE APPROXIMATE. FIELD VERIFY EXACT EXISTING LOCATIONS. RECONNECT DUCTWORK, MOUNTING HARDWARE, CONDENSATE DRAIN, AND REFRIGERATION LINES AFTER UNIT IS INSTALLED. DISASSEMBLE AND RE-ASSEMBLE NEW AIR HANDLER AS REQUIRED TO INSTALL IN THIS LOCATION.
 - BALANCE EXISTING DIFFUSER TO CFM AS INDICATED ON PLANS
 - EXISTING RETURN GRILLE TO REMAIN. PROTECT DURING CONSTRUCTION.
 - REMOVE & REPLACE EXISTING CONDENSING UNIT WITH NEW. DISCONNECT & RE-CONNECT REFRIGERANT LINES. SEE CONTRACTOR OPTION NOTE ABOVE. EXISTING CONCRETE PAD TO REMAIN.
 - NO WORK TO BE DONE IN THIS AREA. PROTECT DURING CONSTRUCTION.
 - EXISTING DISCONNECT TO REMAIN. DISCONNECT AND RE-CONNECT TO NEW EQUIPMENT. RE-FUSE TO MATCH NEW EQUIPMENT.
 - REPLACE EXISTING THERMOSTAT WITH NEW HONEYWELL PRESTIGE THERMOSTAT. CONNECT TO NEW AIR HANDLER AND CONDENSING UNIT.

MECHANICAL FLOOR PLAN
 SCALE: 1/4" = 1'-0"



COMPRESSOR UNIT SCHEDULE (COOLING ONLY)

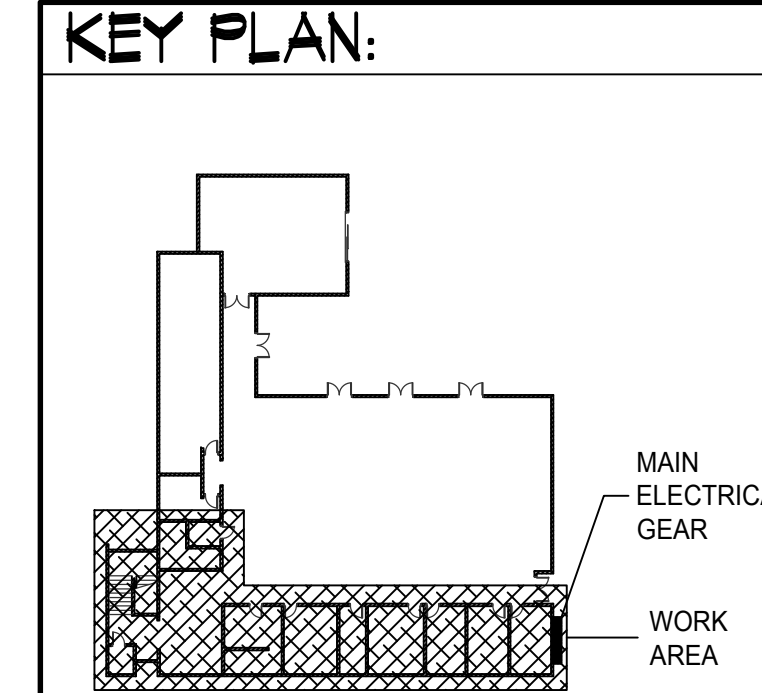
MARK	MIN. NOMINAL SIZE (TONS)	COMPRESSOR RATED LOAD AMPS	FAN FULL LOAD AMPS	MIN. CIRCUIT AMPS	MOCP	POWER	REMARKS
CU 1	5.3	19	2.8	28.8	35	208/60/3	CARRIER 38AK-007 MIN EER 11.2. WITH SEACOAST COATING

- REFRIGERANT R-410a
- AT DESIGN CONDITIONS AND 90°F ENTERING AIR TEMPERATURE TO CONDENSER.
- CONDENSING UNIT MARKS CORRESPOND WITH AIR HANDLER MARKS.
- ELECTRICAL CHARACTERISTICS-COMPRESSOR: 208V/3 PHASE/60HZ
- SEE SPECIFICATION FOR APPROVED MANUFACTURERS

AIR HANDLER SCHEDULE

MARK	MIN. REQ'D OUTPUT BTU/HR COOLING	MINIMUM A.C.F.M.	MINIMUM O.A.	EXT. S.P. IN. W.G.	WEIGHT	POWER	MCA	MOCP	MOTOR		REMARKS
									MINIMUM H.P.	FLA	
AH 1	90,000	3000	500	1"	448	208/60/3	6.5	15	2.8	14.3	HORIZONTAL DRAW THRU CENTRAL STATION AIR HANDLING UNIT WITH FRONT DISCHARGE, DIRECT EXPANSION COIL AND ANGULAR FILTER BOX DESIGN UNIT. CARRIER MODEL 40-RM007SD. WITH SEACOAST COATING

- SEA LEVEL RATING
- AIR HANDLER MARKS CORRESPOND WITH CONDENSING UNIT AND COOLING COIL MARKS.
- NOT USED
- NOT USED
- NOT USED
- NOT USED
- NOT USED
- NOT USED
- SEE SPECIFICATION FOR APPROVED MANUFACTURERS
- NOT USED
- NOT USED
- DOOR OPENINGS TO MATCH PLANS



- GENERAL NOTES:**
- PRIOR TO CONSTRUCTION, THE CONTRACTOR SHALL CHECK AND VERIFY ALL DIMENSIONS PRIOR TO BID AND CONNECTIONS ON THE JOB SITE. ALL WORK SHALL BE EXECUTED FROM MEASUREMENTS TAKEN AT THE SITE.
 - THE MECHANICAL CONTRACTOR SHALL BE RESPONSIBLE TO INSURE PROPER CODE CLEARANCES FOR ELECTRICAL AND MECHANICAL ACCESS WHEN INSTALLING ANY EQUIPMENT SUPPLIED BY THE MECHANICAL CONTRACTOR.
 - IT IS CRITICAL THAT THIS CONTRACTOR COORDINATE EQUIPMENT LOCATIONS WITH PIPING, DUCTWORK, ELECTRICAL CONDUIT AND BUILDING STRUCTURE TO INSURE CODE COMPLIANCE.
 - CONTRACTOR TO FIELD VERIFY LOCATION OF ALL EXISTING DIFFUSERS/GRILLES PRIOR TO CONSTRUCTION THAT MAY BE HIDDEN DUE TO EQUIPMENT/STORAGE.

**Engineered Systems Associates
 Mechanical Engineers**
 Dwayne Sudweeks
 1355 East Center - Pocatello, Idaho 83201
 Phone: (208) 233-0501 Fax: (208) 233-0529 email: esa@engsys.com

**HVAC UPGRADE FOR:
 LDS HONOLULU INSTITUTE AC**
 2014 UNIVERSITY AVENUE, HONOLULU, HI
 PROJECT: MECHANICAL FLOOR PLANS AND SCHEDULES
 PROPERTY # 510-1131
 TRK-23-022-034

THIS WORK WAS PREPARED BY ME OR UNDER MY SUPERVISION AND CONSTRUCTION OF THIS PROJECT WILL BE UNDER MY OBSERVATION
 Signature: *Dwayne C. Sudweeks* 4/30/2022
 SIGNATURE EXPIRATION DATE OF THE LICENSE

MECHANICAL LEGEND

SYMBOL	DESCRIPTION
(T)	ELECTRONIC THERMOSTAT
FC	EQUIPMENT SYMBOL
HD	HAND DAMPER
[Symbol]	ROUND BRANCH DUCT WITH HAND DAMPER
[Symbol]	INSULATED FLEXIBLE DUCT
[Symbol]	RETURN AIR OR EXHAUST GRILLE
[Symbol]	CEILING DIFFUSER
[Symbol]	ROOF MOUNTED UPBLAST EXHAUST FAN

DWAYNE C. SUDWECK
 LICENSED PROFESSIONAL ENGINEER
 No. 12930-M
 HAWAII U.S.A.
 SEP 1, 2021

DRWN. BY: T DAVIS
 CKD. BY: D SUDWECKS
 JOB NO. 21061
 DATE: SEP 2021

SHEET: **M1-0**
 OF: 2